



MF340

The Mech-fiber 340 sets new standards in ration mixing, offering a high degree of on-farm manoeuvrability. It has a similar 'footprint' to the 320 but with its deeper body and repositioned cross auger, delivers higher capacity.

## Mech-fiber™ 340 16m³ Mixer

### Standard Dimensions

#### Mech-fiber™ 340

Height: 2936mm (115.5")

Width: 2646mm (104")

Payload: 6,000kg

Min. Horse Power: 90

#### Mech-fiber™ 340

#### Baleblend™

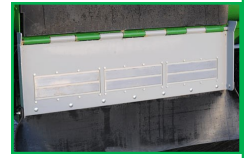
Height: 3061mm (120.5")

Width: 2646mm (104")

Payload: 6,000kg

Min. Horse Power: 90

Machines can be built to individual order and dimensions customised for a variety of farm set-ups.



### Lower power torque and fuel requirements

Controlled chopping speed significantly reduces torque requirements. A typical power unit would be a 90 HP tractor, resulting in a dramatic saving on overall fuel consumption compared with other mixers, despite the larger capacity.

### Superior Mech-fiber mixing

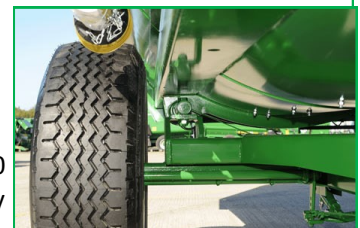
This latest generation Keenan mixing system uses six angled paddles rotating at just 7 rpm. A new knife design and greater clearance at the ends of the paddle-arms allows material to move freely, to further improve mixing.

### Simple two-chain drive system

Keenan's simple two-chain drive system has an unbeatable track record of reliability. A primary drive chain and three sprockets transmit power to the auger and idler. A second sprocket powers the much larger paddle sprocket.

### Increased mixing capacity

The increased capacity of the Mech-fiber 340 mixer is achieved by extending the body down into the chassis and lowering the discharge auger to make a wider, deeper mixer. Variable discharge heights can be achieved with the use of 'raisers' and wheel sizes.



### Automatic Oiler

An automatic oiling system is operated by the hydraulic rams opening and closing the guillotine door. This delivers 'pulses' of oil to the drive chains, lubricating them to the optimum levels for safety and improved chain life.

### Baleblend™ Big Bale processing

The Mech-fiber™ 340 can be supplied with the latest Baleblend™ bale chopping technology. Big round or square bales of forage placed directly on the machine's top cradle are chopped and incorporated into the ration in a matter of minutes.

**Keenan**  
True Technology

**Keenan**  
True Technology